

Geeks Guide

Your journey to the modern workplace



Meet the authors



Nick Richards

Nick founded Computer Geeks in 2008 with a mission to provide truly professional IT services to SMEs. His ambition was to build a business deeply ingrained with skills and enthusiasm for technology. Nick believes IT is an essential pillar for business growth, and that embracing technology is the way to develop, grow and keep pace with the ever-changing demands of the digital age.



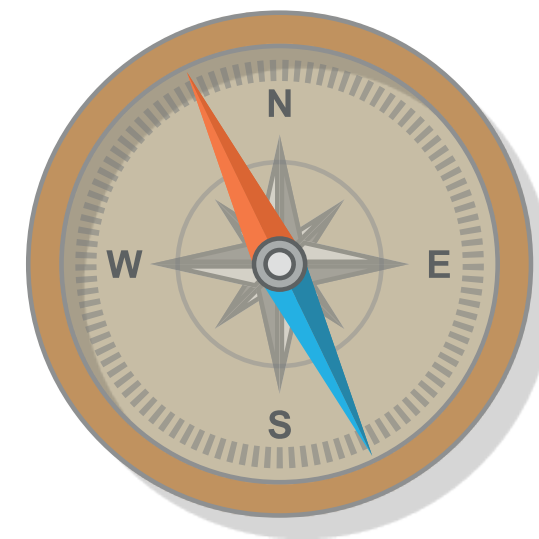
Rob Eeuwens

As Technical Director at Computer Geeks, Rob keeps his finger on the pulse of new developments within the IT industry, ensuring the team is up to date with the latest solutions and services. An enthusiastic advocate for the benefits of well-matched IT solutions, he enjoys introducing SMEs to the transformative potential of modern workplace technology.



Where are you on your journey?

Whatever your business does and however it operates, IT undoubtedly plays an important role. These technologies are the tools through which your people communicate, collaborate and complete tasks, making them essential to the running of your company.



But how effectively is your technology working for you? And will your current IT set-up continue to serve you as the way we work evolves? These are questions that lead to an important (if somewhat daunting) realisation: in order to grow and succeed as businesses, it's vital to continually adapt and invest in technology so that it enables us to keep up with the demands of the modern workplace.

The modern workplace is something we're pretty passionate about at Computer Geeks. Being able to work from anywhere, team up on projects remotely and access everything you need from the device in your pocket is an amazing thing. We believe all businesses can benefit from embracing the modern workplace, but getting there requires some careful planning.

That's why we created this guide. Whether you're taking your tentative first steps towards working in the cloud or are already well on your way to a fully-empowered remote team, the following pages will help you navigate the challenges and opportunities that arise during your journey to the modern workplace.

We'll cover:

- > Common challenges of moving from traditional IT to the modern workplace
- > Exciting opportunities and benefits that modern workplaces enjoy
- > Mapping your voyage from server-based office to cloud-based workplace
- > Advice for approaching the journey in a way that's realistic and achievable
- > How to get the help you need without hiring new staff

Ready to begin your journey?

Let's get started then!



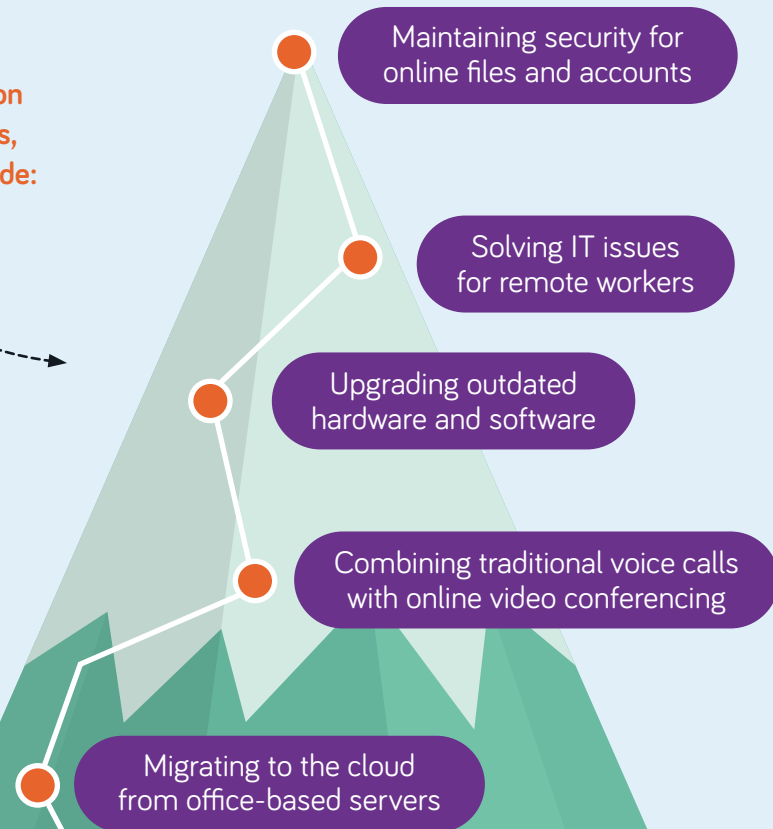
Challenges ahead

There's no getting around it: transitioning from a traditional (albeit old-fashioned) office set-up to a more forward-thinking, tech-enabled modern workplace comes with a few challenges.

Workplace technology was already changing before COVID-19 arrived. National lockdowns only accelerated a shift that was already underway. Forced to work from home, people adapted quickly to remote operations, collaborating via Microsoft Teams meetings and accessing cloud-based files from the convenience of laptops, tablets and phones.

Now that we're all used to this new way of working, how can we continue to embrace the flexibility of remote working, evolving our technology infrastructure to suit the modern workplace?

The particular challenge associated with this transition will depend on your business, but common concerns include:



If any of those sound familiar, fear not – there are lots of ways to overcome these common obstacles on your journey to the modern workplace.

Why the modern workplace is worth the journey

You now know the kinds of challenges associated with transitioning to the modern workplace. So what's the prize at the end of the journey – that magic destination that makes all the hard work worthwhile?

In a word, it's evolution. When you're equipped with a powerful IT infrastructure, your technology begins to work for you in ways that you might never have thought possible.

In the modern workplace, you and your team can reach colleagues, software and files from anywhere, and from any device. Whether you're sat at home or in a hotel room on the other side of the world, you're connected with everything you need to get your work done to a high standard. Your virtual infrastructure is disaster-proof – your cloud-based files are securely backed up in an offsite location to safeguard against any threat. Cyber security is as good as it gets, and if you

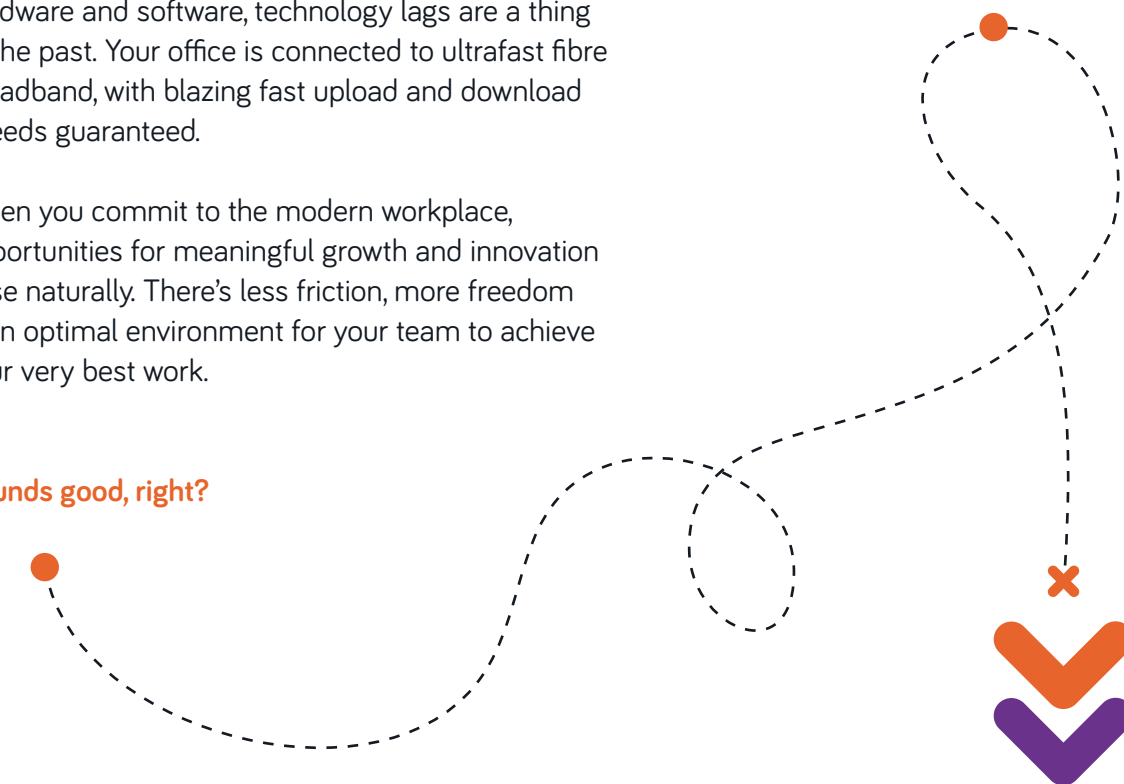
encounter any problems, there's a virtual team on hand to help at all times.

Did we mention speed? Armed with the latest hardware and software, technology lags are a thing of the past. Your office is connected to ultrafast fibre broadband, with blazing fast upload and download speeds guaranteed.

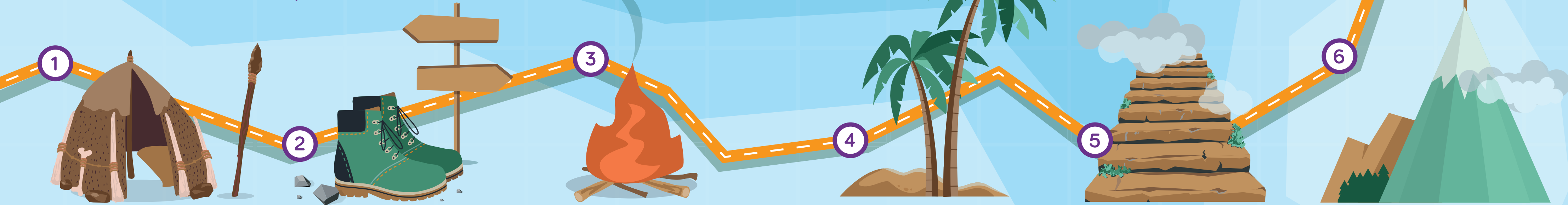
When you commit to the modern workplace, opportunities for meaningful growth and innovation arise naturally. There's less friction, more freedom – an optimal environment for your team to achieve your very best work.

Sounds good, right?

But we still need to get you there. So before we get too ahead of ourselves, let's map out the journey that lies ahead.



Navigating your way to the modern workplace



Wilds of antiquity

Watch your step in the wilds of antiquity, where outdated technology and inefficient systems lurk in every shadow. To escape this jungle, you'll need to be selective about the tech you choose to keep, freeing yourself from the tangled wires of the past to carve out a path of new possibilities.

Slopes of change

It's easy for unaided travellers to fall at the slippery slopes of change. These steep and craggy foothills take persistence to climb, with niggling tech troubles as you acclimatise to your new surroundings. Be patient here, and seek help from IT gurus when the going gets tough.

The impenetrable fortress

For cyber security that can stand up to increasingly complex online threats, you need an impenetrable fortress. Equipped with firewalls, encryption and virus protection, this sturdy fort is designed to fend off digital dangers of all kinds.

Collaboration coast

The golden sands of this alluring coastline stretch as far as the eye can see, providing easy access to shared resources and collaborative projects. Once you've arrived, you can take full advantage of modern workplace technologies like cloud-based software and conference calls.

Stairway to the cloud

Migrating to the cloud can be one of the trickiest stages of the journey, but also one of the most rewarding. Once your business overcomes this challenge, your entire organisation is free to work from anywhere, cut loose from the tethers of office-based computers and servers.

Productivity peak

You've made it! Successfully transitioning from outdated tech to the modern workplace means you're free to explore every avenue of opportunity. Backed by robust security and armed with an arsenal of cloud-based collaborative platforms, the sky's the limit for you and your organisation.

Common pitfalls (and how to avoid them)

With so many tempting benefits to modern workplace technology, it's no surprise that many companies rush into the process of replacing their outdated IT.

But without planning the journey carefully, organisations can end up stumbling into all manner of business-threatening hazards. It's therefore wise to take your time when transitioning from a traditional IT set-up to a more modern infrastructure, considering the problems you might encounter along the way and planning your journey accordingly.

Take care to navigate around these common pitfalls, and you'll be in a much better position when it comes to adopting the latest technology.

Reluctant teammates

There's a chance that not everyone in your team will be excited to make the leap from old to new. Some colleagues may view the process as a distraction from day-to-day work, with new processes disrupting tried-and-tested systems. Be open about your reasons for upgrading and take the concerns of teammates seriously – with the right training and time to adapt, everyone can benefit from modern workplace technology.

Compatibility issues

Your day-to-day operations may rely on old software that's no longer supported by modern workplace technology. If this is the case, you'll need to take care when transitioning to a new system. Future-proof solutions can usually be found, but it may take some time to migrate old data and files into your new IT infrastructure. Consult a team of professionals who can help you do this in a way that's efficient while minimising disruption.

Legacy contracts

If your business is already tied into contracts for services like broadband and telephony, switching to new solutions may not be possible. You could, however, introduce some other improvements without affecting your existing contracts, following a gradual roll-out of new technology with the help of an IT partner. Then, once you've honoured any existing contracts, you'll be in an ideal position to choose new providers that match your needs.

Security risks

Cyber security should always be considered when making IT-related decisions. Upgrading your company's technology should ultimately result in improved security, but go about it the wrong way and you could end up compromising the safety and privacy of your digital assets. If you're not sure how to transition your workplace to cloud-based storage in a secure way, hire a team of cyber security professionals to manage the process for you.

Expensive upgrades

Let's address the elephant in the room: new IT solutions are rarely cheap. Upgrading all the old devices in your company for shiny new ones will require some financial investment. But the benefits of doing so can be huge. In time, switching from office-based servers to a cloud-based infrastructure could end up reducing your overheads. Making a smart investment now could save you money in the long term while future-proofing your business with modern technology.

Let the Geeks be your guide

Wherever you are on your journey to the modern workplace, having access to a friendly and experienced team of IT professionals will help you reach your goal faster.

You'll undoubtedly come across a few challenges as you transition from old systems to a modern IT infrastructure. When those tricky obstacles do arise, it's reassuring to know that a group of IT experts are on hand to help you overcome them with minimum fuss or disruption.

That's what we do at Computer Geeks. We help forward-thinking, ambitious SMEs to evolve their technologies and take advantage of game-changing solutions, making the most of all the benefits and opportunities the modern workplace can offer.

Some of our most popular solutions include:



Migrate your business from servers to the cloud, enable your team to work from anywhere and gain all the benefits of Microsoft 365 with unlimited support from our experts.



For businesses already used to collaborating through Google Workspace or other cloud platforms. Achieve a fully secure and highly flexible way of working, no matter where your team is located.



Revolutionise your communications by enabling inbound and outbound calls in Microsoft Teams, streamlining business telephony with one powerful solution.



Lightning-fast download and upload speeds for your business premises, with a stable and guaranteed connection that won't let you down.



Unlimited access to the Computer Geeks service desk: experienced engineers who can manage and secure all your devices, solve your computing problems and provide peace of mind for you and your team. Ideal for businesses that rely on a traditional server-based setup.

Proud to be a Microsoft Gold Partner

As a Microsoft Gold Partner, we're able to offer our clients the highest level of customer care available, with access to the very best and latest Microsoft products and services.

This certification means we've repeatedly proven our skills on client projects, and have been recognised for our ongoing technical capabilities by Microsoft. In other words, you can rest assured that we're investing in the ongoing training of our team, and are entirely up to date on Microsoft's most powerful solutions for businesses like yours.

Gold
Microsoft Partner



Computer Geeks are big enough to support our ambitions and growth, and small enough that we feel like a key account, not just a number. They can be relied on to do the right things, and to do what they say they'll do. Ultimately, they're people I'd hire in my business, which is one of the main things I look for in a partner."



Ben Brown, Chief Technology Officer at Onto





Ready when you are

If you've found the information in this guide useful and feel ready to take your next step towards the modern workplace, we'd love to hear from you.

Drop our friendly team a line on **0117 325 0370**, email us via **hello@geeks.co.uk** or visit our website at **[geeks.co.uk](https://www.geeks.co.uk)**

